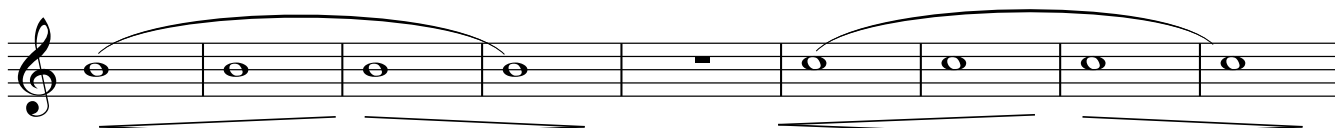
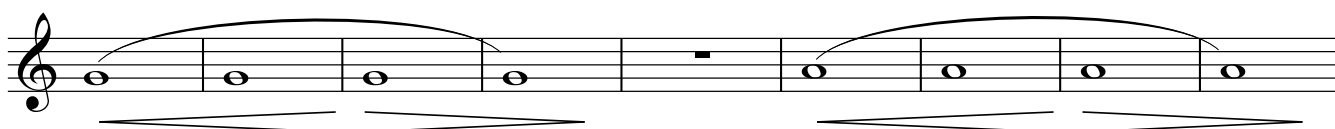
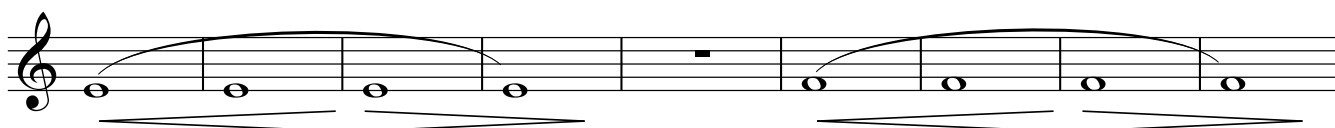
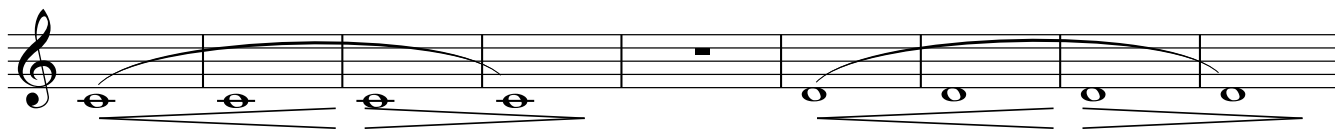


Nr. 15: T ♩ = 80

mf

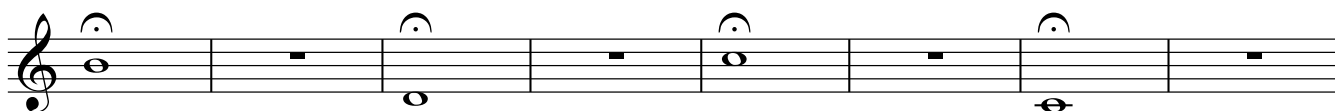
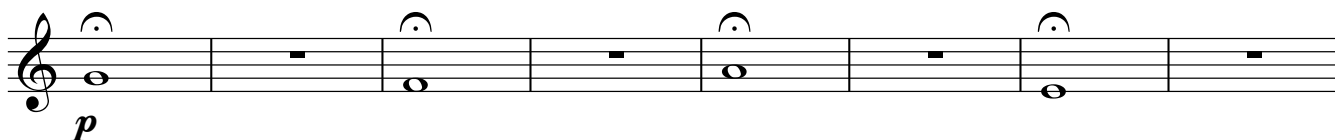
Nr. 16: T ♩ = 80

mf

Nr. 17: K ♩ = 60**Nr. 18: K**

Halte den Ton aus, solange Du kannst, (Minimum: 30 sec).

Kontrolliere Dich mit Stoppuhr un dokumentiere Deine Fortschritte.



Nr. 19: B ♩ = 60 *Wenn die Bindungen klar und sauber sind, steigere das Tempo!*

Musical score for Nr. 19, B, measures 1-4. The score is written in treble clef with a key signature of one flat (B-flat). The tempo is marked as ♩ = 60. The first measure is marked *mf*. The notes are: B_4 (quarter), C_5 (quarter), D_5 (quarter), E_5 (quarter), F_5 (half). The second measure is: B_4 (quarter), C_5 (quarter), D_5 (quarter), E_5 (quarter), F_5 (half). The third measure is: B_4 (quarter), C_5 (quarter), D_5 (quarter), E_5 (quarter), F_5 (half). The fourth measure is: B_4 (quarter), C_5 (quarter), D_5 (quarter), E_5 (quarter), F_5 (half). There are first and second endings indicated by dashed lines above the staff.

Nr. 20: B ♩ = 80

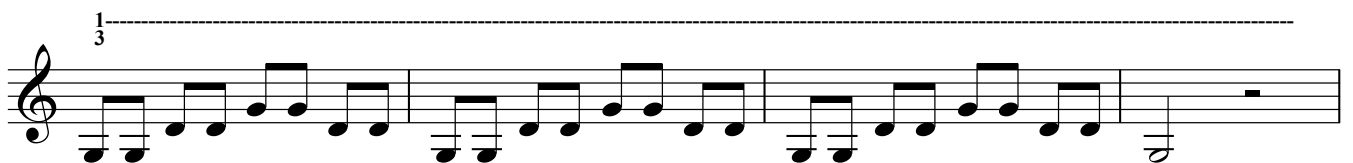
Musical score for Nr. 20, B, measures 1-4. The score is written in treble clef with a key signature of one flat (B-flat). The tempo is marked as ♩ = 80. The first measure is marked *mf*. The notes are: B_4 (quarter), C_5 (quarter), D_5 (quarter), E_5 (quarter), F_5 (quarter), G_5 (quarter), A_5 (quarter), B_5 (quarter), C_6 (half). The second measure is: B_4 (quarter), C_5 (quarter), D_5 (quarter), E_5 (quarter), F_5 (quarter), G_5 (quarter), A_5 (quarter), B_5 (quarter), C_6 (half). The third measure is: B_4 (quarter), C_5 (quarter), D_5 (quarter), E_5 (quarter), F_5 (quarter), G_5 (quarter), A_5 (quarter), B_5 (quarter), C_6 (half). The fourth measure is: B_4 (quarter), C_5 (quarter), D_5 (quarter), E_5 (quarter), F_5 (quarter), G_5 (quarter), A_5 (quarter), B_5 (quarter), C_6 (half).

Nr. 21: B ♩ = 80

Nr. 22: B ♩ = 80

Nr. 23: B ♩ = 80

Nr. 24: S *Alle Stoßübungen (S) sollten sowohl in verschiedenen Tempi als auch mit unterschiedlichen Artikulationen (staccato, tenuto) geübt werden.*



Nr. 25: S



Nr. 26: S

mf

Musical score for Nr. 26: S, measures 1-4. The score consists of four staves of music. The first staff begins with a dynamic marking of *mf*. The music is written in treble clef and features a rhythmic pattern of eighth and sixteenth notes, with some rests. The first staff ends with a whole note rest.

Nr. 27: S

mf

Musical score for Nr. 27: S, measures 1-4. The score consists of four staves of music. The first staff begins with a dynamic marking of *mf*. The music is written in treble clef and features a rhythmic pattern of eighth and sixteenth notes, with some rests. The first staff ends with a whole note rest.

Nr. 28: S

mf

Musical score for Nr. 28: S, measures 1-4. The score consists of one staff of music. The first staff begins with a dynamic marking of *mf*. The music is written in treble clef and features a rhythmic pattern of eighth and sixteenth notes, with some rests. The first staff ends with a whole note rest.